



Sherwood Middle School

Shrewsbury, MA

Newsletter Date
May/June 2016

6 Navy Newsletter

The Big Finish!

We are so proud of our 6 Navy students as they make the most of every school day. Understandably, there is a lot of excitement about end of the year school events such as field trips, chorus and band performances, and field day. In the coming days, it may become difficult for students to remain focused on the routine aspects of day-to-day life at school. We will continue to provide challenging work, and we will maintain our expectations for a strong, positive ending to the school year and, when the time comes, a great summer!

Math

The students expressed confidence as they faced the challenges of PARCC last week. In class, we started our last CMP3 math unit of the year: **Data About Us**. The students are currently investigating "What are some characteristics of a typical middle school student?" The parent letter for this unit has been posted to our website.

Science

May has been a busy month for the students at Sherwood and 6 Navy students continue to work hard! Our last unit of the year is Astronomy and all students are encouraged to continue looking at the skies and reaching for the stars! We look forward to our field trip to the Christa McAuliffe Challenger Learning Center at Framingham State University on May 16th. Permission slips were sent home on May 4th; please return by May 10th.

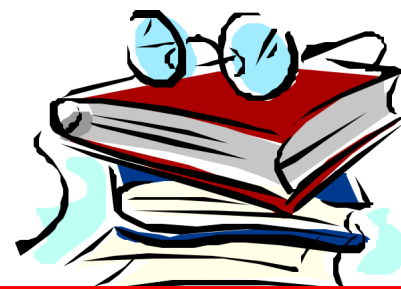
Social Studies

In Social Studies, we are involved in a study of Ancient Greece, and will end our year with a study of Classical Greece. The enduring understanding we strive to achieve is the legacy Ancient Greece left behind. We will study the origins of democracy, greek mythology and literature and athletics. We will also explore the relationships between different Greek city-states. We will also be taking a field trip to the Worcester Art Museum on June 7 to see mosaics and other ancient artifacts in galleries related to ancient Assyria, Greece, Egypt and Rome. More information and permission slips will be sent home May 9.

English Language Arts

We are going to embark on a study of Greek mythology. We will have a wonderful opportunity to work on our argument writing skills as we compete in "Myth Madness". Students will be reading myths, and choosing the gods or goddesses who they think are the most powerful.

We will be wrapping up the year with a choice novel unit. Students will have the opportunity to choose a novel that interests them. They will form small book groups, and work through literary elements of their novel to discover the theme. In addition to choosing their novel, students will have a choice in the types of projects they complete throughout this unit.



May/June Highlights

**PARCC dates: 5/4, 5/5, 5/6,
Monday, May 16**

Field trip to Christa!

Monday, May 30

Memorial is a day to remember the men and women who died while serving in the American military.

Tuesday, June 7

Field trip to Worcester Art Museum

Thursday, June 16

Field Day

Tuesday, June 21

Last Day of School! Best wishes to all for an enjoyable and safe summer.

Field Day Reminders

Parents: We need a few volunteers to help out. Let us know if you have some free time on June 16.

Students: Show your team spirit as we participate in athletic games!
Remember to:

- Wear a navy t-shirt.
- Bring plenty of water.
- Wear a hat and sunscreen.

